

# LIVE WIRE

Choptank Electric Cooperative, Inc. Vol. 10, NO. 8

**Inside**

*Hurricane info  
p. 2*

*Tree first aid, p. 3*

## AUGUST 2005

*Live Wire* is a monthly newsletter published for members of Choptank Electric Cooperative, P.O. Box 430, Denton, MD 21629

**Toll Free:**  
1-877-892-0001

**Outage Reporting:**  
1-800-410-4790,  
toll free,  
24 hours/ day,  
7 days/week.

**Automated Customer Service Line:**  
1-800-311-8556, toll free  
410-479-4206  
(Caroline Co.)

**Internet site:**  
www.choptankelectric.coop

**President and CEO**  
Frederick L. Hubbard

**Board of Directors**  
Carl R. Widdowson  
*Chairman, Somerset Co.*  
David W. Bruning  
*Vice Chairman, Worcester Co.*

William F. Schrader  
*Secretary-Treasurer, Cecil Co.*

Olin S. Davis III  
*Kent Co.*

Francis A. Callahan Jr.  
*Caroline Co.*

W. Franklin Moore  
*Queen Anne's Co.*

Jeffrey D. Rathell Sr.  
*Talbot Co.*

Peggy D. Trader  
*Wicomico Co.*

William L. Spicer  
*Dorchester Co.*

Francis A. Ruffo Sr.  
*At-Large*



Choptank youth present 1st District Congressman Wayne Gilchrest with a photograph of the American Flag in appreciation for his support of the program over the years. From left: China Matthews, Vienna; Matthew Teffeau, Preston; Rep. Gilchrest; Christian Jensen, Denton; Rachel Bounds, Denton; Karen Jones, Vienna.

## '05 Youth Tour largest ever held

Five students representing Choptank Electric Cooperative joined with over 1,400 of their peers at the annual National Rural Electric Cooperative Association (NRECA) Youth Tour in Washington, D.C. June 19-23.

This was the largest Youth Tour held since the NRECA began to coordinate the program in 1964. The assembly of teenagers represented 44 states.

The Eastern Shore delegation was part of 40 students from the Virginia, Maryland and Delaware Association of Electric Cooperatives. Choptank's representatives were China Matthews and Karen Jones, both from Vienna, and students at North Dorchester High School, Matthew Teffeau, Preston, a student at Colonel Richardson High, and Rachel Bounds and Christian Jensen, both from Denton, and students at North Caroline High.

Students on the Youth Tour learn about electric cooperatives, American history and U.S. government by attending educational seminars, visiting with their representatives in the House and Senate, and sightseeing throughout Washington.

The statewide group toured Washington landmarks including the Holocaust Museum, Museum of the American Indian, the World War II, Korean War and Vietnam memorials, and the National Cathedral. They observed the changing of the guard at the Tomb of the

Unknowns at Arlington National Cemetery and visited the Philippine Embassy.

The Maryland delegation met with Sen. Paul Sarbanes (D-MD), and Rep. Wayne Gilchrest (R-1st), and staff from the offices of Sen. Barbara Mikulski (D-MD) and Rep. Steny Hoyer (D-5th) on Capitol Hill.

At the Youth Day kick-off emphasizing "Commitment to Community," the keynote speaker was Mike Schlappi, a four-time Olympic medalist in USA men's wheelchair basketball, and president of a communications firm which provides motivational speaking for businesses and organizations.

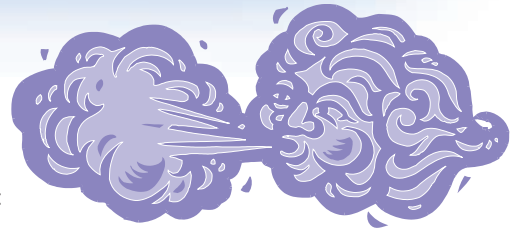
Matthew Teffeau was selected to represent the State of Maryland at the 8th annual NRECA Youth Leadership Conference held July 16-20 in Washington. This joint effort of local electric co-ops, statewides and the NRECA was created to provide an extension of youth activities available to states participating in the Youth Tour. It is designed to develop leadership and presentation skills and provide a broader understanding of electric cooperatives.

To be eligible for Youth Tour, a student's parents or guardian must be a member of Choptank Electric, and the student must be a sophomore or junior in high school. For information, call 1-877-892-0001 ext. 3074.

**Are you ready for the season's storms?  
See inside!**



# Weathering the storm



## BEFORE THE STORM

- Secure garbage cans, lawn furniture or anything that could fly around and cause damage.
- Trim back dead or weak tree branches.
- Learn the safest route from your home or business to a safe shelter from the high winds or flooding. If there is a flood, you may only have minutes to get to safety.
- Make an itemized list of all your personal property for insurance verification purposes.

## IF HEAVY RAINS OCCUR

- Keep your battery-operated radio tuned to a local station, and follow all instructions. If you are told to evacuate, move out of the house or building to safe, high ground.
- Be aware that floods are deceptive. Avoid already flooded areas. Do not attempt to cross any stretch of flood waters on foot if the water is above your knees.
- Do not drive where water is over the road. Under those flood waters, the road could already be washed away and rapidly rising water could carry your car away.

## AFTER THE FLOOD

- When it is safe to return to your home, before you enter the house, be sure that the structure is not in danger of collapsing. Watch out for rodents and snakes.
- Begin cleanup as soon as possible. Throw out perishable foods; they may be contaminated.

## HURRICANE SUPPLIES LIST

Keep these supplies at home during the hurricane season in a separate "Hurricane Supplies Kit" so they are easy to find when you need them.

- Canned or package foods, milk and beverages (at least a three-day non-perishable food supply)
- Water (for drinking purposes, one gallon per person per day; fill bathtub and other containers)
- First aid kit
- Water purification tablets (can be purchased at your local pharmacy) Bleach (without lemon or any other additive).
- Extra prescription medicine
- Lantern
- Fuel
- Fire extinguisher
- Battery-operated radio
- Flashlights
- Extra batteries
- Toiletries
- Can opener (non-electric)
- Eating utensils
- Matches
- Emergency cooking facilities
- Baby food, diapers and formula
- Portable cooler
- Mosquito repellent

## ELECTRICAL SAFETY

Electrical safety is extremely important

in any storm situation, especially if the storm may have resulted in heavy rains or even flood conditions.

Following are some electrical safety tips:

- Beware of outdoor hazards. Watch out for loose or dangling power lines, and report them immediately to proper authorities. It is not unusual in a disaster such as this for more people to be killed by carelessness in the aftermath than were killed by the event itself.
- Be sure all electric and gas services are turned off before entering buildings for the first time.
- Disconnect main switch and all circuits.
- Watch for electrical shorts or live wires. Don't turn on any lights or appliances until an electrician has checked the system for short circuits.
- Electric motors in appliances that have been flooded should be thoroughly cleaned and reconditioned before they are put back into service.

## PORTABLE GENERATORS

Storms can disrupt the flow of electrical power to your home or business. In recent years, people have increasingly bought backup generators to provide temporary power during such outages.

Portable generators can be dangerous if they're not used properly. The two main hazards are carbon monoxide poisoning from exhaust fumes and electrocution.

### • Choosing a generator

Determine the "constant or run" wattage you need a generator to provide. A generator will operate a limited number of appliances and lights. Decide what items you need most and add up their total wattage; that's the "constant" or run wattage.

### • Determine the "start-up" wattage.

Refrigerators, freezers, air conditioners, and furnace blowers require up to three times their normal, constant wattage to start. Choose a generator that has a surge rating that meets or exceeds your "start-up" wattage needs.

Compare the generator's voltage ratings with those of the appliances to which you want to provide power. Portable generators may be rated for 120 volts only - or for a combination of 120 and 240 volts. Most household appliances are rated at 120 volts, but some larger appliances may require 240 volts.

### • Installing a generator

Never install a portable generator indoors - not even in a garage. Its exhaust fumes could kill you.

Buy a carbon monoxide alarm. If the exhaust fumes do somehow seep into your building, the alarm will warn you.

Never hook up a generator directly to your building's main wiring. This creates

"backfeed." That's where a generator sends electricity to outside power lines, which may have been downed by a storm or turned off by utility employees. Back-feed can electrocute you or workers repairing nearby lines.

Instead, have a qualified electrician install a double-pole, double-throw transfer switch between the generator and utility power in compliance with all state and local electrical codes. It will isolate your generator's power from utility lines.

### • Using a generator

Be careful with the fuel. Turn the generator off to refuel; gas vapors can ignite if they touch hot machinery. Store fuel in a secure location.

Keep the generator, cords, and appliances away from water. Make sure you're standing in a dry place when you switch the generator on or off.

Turn off or unplug appliances before you start the generator. Once the generator is running, turn the appliances on one at a time to avoid overloading the unit. Always start your largest electric motor first, then plug in other items one at a time.

When regular electric power is restored, turn off the generator.

## OUTAGE REPORTING

Always use the automated outage reporting system number since this allows the co-op to diagnose problems more quickly.

It is very important that members have the correct phone number listed for all of their co-op accounts.

When a members calls the outage reporting line at 1-800-410-4790, the Caller ID system identifies the number from where they are calling and compares it to the number listed in the accounts data base.

If the system does not see a match, it repeats the number from where the member is calling and asks if this is the number where the outage is located. If the member is calling from a cell phone or location other than that of the outage, they can speak the actual phone number for the outage into the system. The system then uses that number to verify in the accounts data base. The system then gives the address and asks the member to verify this by speaking "yes."

The system generates outage specific messages with an estimated time of power restoration. If the phone number is recognized in the data base, the member hears a message about the outage in their area.

If you need to update your phone information for your account, please notify the co-op call center at 1-877-892-0001.



# Tree first aid important after a storm

In the aftermath of a major storm, the initial impulse of property owners is generally along the lines of "let's get this mess cleaned up," but hasty decisions can often result in removing trees that could have been saved.

The National Arbor Day Foundation urges home and property owners to follow a few simple rules in administering tree first aid after a storm:

- Don't try to do it all yourself. If large limbs are broken or hanging, or if high climbing or overhead chain saw work is needed, it's a job for a professional arborist.

- Take safety precautions. Look up and look down. Be on the alert for downed power lines and dangerous hanging branches. Stay away from any downed utility lines — low-voltage telephone or cable lines and even fence wires can become electrically charged when there are fallen or broken electrical lines nearby. Don't get under broken limbs that are hanging or caught in other branches overhead. And, unless you really

know how to use one, leave chain saw work to the professionals.

- Remove any broken branches still attached to the tree. Removing the jagged remains of smaller sized broken limbs is one common repair that property owners can make after a storm. If done properly, it will minimize the risk of decay agents entering the wound. Smaller branches should be pruned at the point where they join larger ones. Large branches that are broken should be cut back to the trunk or a main limb by an arborist.

- Repair torn bark. To improve the tree's appearance and eliminate hiding places for insects, carefully use a chisel or sharp knife to smooth the ragged edges of wounds where bark has been torn away. Try not to expose any more of the cambium (greenish inner bark) than is necessary, as these fragile layers contain the tree's food and water lifelines between roots and leaves.

- Resist the urge to over-prune. Don't

worry if the tree's appearance isn't perfect. With branches gone, your trees may look unbalanced or naked. You'll be surprised at how fast they will heal and grow new foliage.

- Don't top your trees! While storm damage may not always allow for ideal pruning cuts, professional arborists say that "topping" main branches back to stubs is one of the worst things you can do for your trees. Stubs will tend to grow back a lot of weakly-attached branches that are even more likely to break when a storm strikes. Also, the tree will need all its resources to recover from the stress of storm damage. Topping the tree will reduce the amount of foliage on which the tree depends for the food and nourishment needed for regrowth. A topped tree that has already sustained major storm damage is more likely to die than repair itself.

(Source: *USDA Forest Service and the International Society of Arboriculture*)

## Recent outages on the co-op system

6/22, Airey, New Hope, Walston Switch, West Denton, 45 min. - 2.5 hrs., 94 members, lightning.

6/24, Longwoods, brief outage, 1,414 members, small animal.

6/28, Barclay, 1 hr., 150 members, overload.

6/28, Millington, 55 min., 80 members, lightning.

6/30, East New Market, 2 hrs. 15 min., 212 members, equipment fault.

7/3, IB Corners, 20 min., 38 members, unknown.

7/4, Ocean Pines, 5 min., 69 members, unknown.

7/4, Ocean Pines, 1 hr., 20 members, equipment fault.

7/5, Barclay, 2 hrs., 20 min., 70 members, equipment fault.

7/5, Princess Anne, 30 min., 189 members, equipment fault.

7/5, Princess Anne, 30 min., 134 members, equipment fault.

7/5, Princess Anne, 20 min., 134 members, accident.

7/7, Longwoods, 50 min. - 1 hr., 40 min., 1,409 members, small animals.

7/7, Mardela Springs, 1 hr., 15 min., 1,374 members, broken crossarm on Conectiv transmission line.

7/7, Sinepuxent, 4 hrs., 50 min., 1,374 members, contractor dig in.

7/8, Kingston, 1 hr., 60 members, tree on line.

7/8, Millington, 1 hr. 5 min., 89 members, right of way problem.

7/8, Princess Anne, 8 hrs. 50 min., 147 members, moisture.

7/8, Sinepuxent, 1 hr. 20 min., 326 members, pole fire.

7/9, Hillsboro, 1 hr., 20 min., 385 members, equipment fault.

7/10, Longwoods, 40 min., 272 members, unknown.

## Watt's the Answer?

Win a \$10 credit on your bill in our monthly trivia contest. Readers who send in the correct answer are entered in a drawing. Entries must be postmarked/dated by Sept. 5.

**Watt's the Answer for August:  
Do not pass go, do not collect \$200!  
How much does it cost to get out of  
jail in the game "Monopoly?"**

Send to: Watt's the Answer? Choptank Electric, P.O. Box 430, Denton MD 21629 or email: [anew@choptankelectric.coop](mailto:anew@choptankelectric.coop). Please provide account or phone number.

The June winner was Kristen Cott of Ocean Pines who knew those little blue cartoon characters are "Smurfs."

## June Trust Awards

The following awards were given in June by the Choptank Electric Trust Inc., funded by Operation Round-Up.

Rackliffe House, Worcester Co., \$1,000, restoration project  
Immaculate Conception School, Cecil Co., \$1,500, playground project  
Preston Elementary School, Caroline Co., \$250, school programs  
Galena Lions Charities, \$1,000, sight projects  
Kent Family Center, \$2,500, summer youth programs  
North Dorchester High School Athletic Boosters, \$1,500, wrestling equipment  
Boys & Girls Clubs of Cecil Co., \$2,500, after school program  
Boy Scout Troop 464, \$349, new flags  
Boy Scout Troop 130, \$922, camping program  
Friends of Somerset Community Services, \$2,000, client programs  
Disabled individuals, \$1,400, medical assistance and home upgrades

## CHOPTANK SECURITY

Choptank Security offers the very best in wireless, supervised security technology, plus LifeGard, the personal home emergency system.

Yes, I am interested in a no cost home security/life safety analysis at my home. Please call me to set up an appointment:

Name \_\_\_\_\_

Address \_\_\_\_\_

Phone \_\_\_\_\_ Best time to call \_\_\_\_\_

Send me information about Choptank Security's maintenance program.

Send to: Choptank Security Systems, Attn: June Lederer  
P.O. Box 310, Denton MD 21629



Pine Steppers Square Dance, 4th Sat., 7 p.m. \$5. Ocean Pines Community Ctr. 410-208-3286/ 208-6777.

All-You-Can-Eat Country Breakfast Buffet, Crumpton Firehouse, sponsored by Ladies Auxiliary, 2nd Sun., 8-11 a.m.

Vietnam Vets of America, 1st Thurs., 7 p.m., Easton VFW. 410-943-1374. Lower Shore, 3rd Thurs., VFW 194, Salisbury. 410-651-0904.

Bay Country Chorus (barbershop), every Mon., 7 p.m., Miller Hall, behind Trinity Cathedral, Goldsborough St., Easton. 410-770-8262.

Bingo, Willards Fire Co. every Thurs., 7 p.m., at Lions Club. 410-835-8678; at Pittsville Fire Co. every Fri., 7 p.m. 410-835-2323.

Peninsulaires barbershop chorus, every Tues. 7:30 p.m., Wicomico Civic Ctr., Flanders Rm., Salisbury. 410-641-8927 or 410-543-8628.

Federalburg VFW Post 5246, bingo every Thurs., doors open 5:30 p.m., games 7:20 p.m. 410-754-5020.

Ocean Bay Chorus, Sweet Adelines, every Mon., 7 p.m., Wicomico Civic Center, Flanders Room, Salisbury. 410-749-0991.

Bingo, Hurlock Am. Legion, every Fri., 7:30 p.m., 410-943-8205; every Tues., 6 p.m., Post 29, Denton, 410-479-2708.

Ocean Waves Square Dance Club workshop, every Tues., 7 p.m., Wicomico Civic Ctr., Salisbury. 410-742-2398 or 883-3723.

Delmarva Chorus, Sweet Adelines, every Mon., 7 p.m., Ocean Pines Community Center. 410-641-8088 or 208-9722.

Disabled American Veterans Chap. 34, 4th Thurs., 8 p.m., Meuse VFW Post 194, Salisbury. 410-749-4518.

Chesapeake Christian Riders Chap. of CMA, 4th Sat., Golden Corral, Easton, 9-11. All welcome. 410-943-8325.

Pinochle Group, every Wed., 9:45 a.m., 410-641-8836, Bridge Club, every Wed., 10 a.m., 410-641-7667, Ocean Pines Yacht Club.

Pepper Steppers Square Dance, 2nd Sat., 8 p.m., First UM Church Hall, Chestertown. 410-758-1454 or 778-4578.

Bingo, Redmen Lodge, Fruitland, Mon., 6:30 p.m. 410-742-6859.

Wellness Community-Delmarva, weekly support groups for cancer patients/families, Talbot, Worcester, Wicomico. 888-806-0756.

Heartland Quilt Guild, 1st Thur., 7 p.m., Denton Library, large classroom. Info., 410-482-8131,

Women Supporting Women (breast cancer group), 3rd Wed., 7 p.m., Atlantic Business Ctr., Ste. 213, Berlin, 410-641-2849.

US Submarine Vets, 3rd Sat., Dover DE, for info call 410-482-6994 or 302-945-2448.

Willards Lions Club Bingo, every Tues., 5 p.m., games 7 p.m., meals served. 410-835-2328.

TOPS weight loss, Tues., 6:30 p.m., 1st Baptist Church, Marydel, 410-482-2658; Christ UM Church, Salisbury, Thurs., 7 p.m. 410-749-9335 or 543-9039; Church of God, Washington St., Easton, Thurs., 6 p.m. 410-822-2630 or 673-2248.

Pine'eer Craft Shop, Ocean Pines Community Center, 239 Ocean Parkway, open every Sat. & Sun., 10 a.m.-2 p.m.

Line dance, Eastside Men's Club, Alexander Ave., Salisbury, every Fri. Beginner's lessons at 6 p.m. 410-749-1981.

National Assn. of Retired Federal Employees, 3rd Thurs., English's South, Rt. 13, Salisbury. 410-749-6635 or 742-8073.

Activity Singles Klub, Easton, 2nd Wed., covered dish, 410-822-7468.

South Dorchester Folk Museum, 1st Wed., 7 p.m., Blackwater National Wildlife Refuge Visitors' Center, near Cambridge.

First Saturday Writers Group, Ocean Pines Branch, Worcester Public Library, all welcome. 410-641-5515.

Children's Health Program, for pregnant women & children to age 19. Kent, 410-778-7035, QA, 410-758-0720, Talbot, 410-819-5670.

Eastern Shore Stamp Club, 1st Tues., Wicomico Public Library, Salisbury, 6:30 p.m. All are welcome. 410-208-2929.

Tidewater Stamp Club, 2nd & 4th Tue., 7 p.m., 14 S. Harrison St., 2nd fl., Easton. Public is invited. 410-822-1371.

First Monday, HIV/Aids support group in Salisbury, 1st & 3rd Mon. 5:30 p.m. 410-219-9000 ext. 101, 443-523-1745 or 443-523-1744.

Open duplicate bridge game, every Mon., 7 p.m., Riverside Homes, Salisbury. 410-835-8343.

Disabled American Veterans Auxiliary Unit 34, 4th Thurs., 8 p.m., Meuse Post 194, Salisbury. 410-749-4518.

Living with Cancer, 2nd, 3rd, 4th Thurs., 4-5:30 p.m., Kent & Queen Anne's Hospital, cafeteria meeting room. 410-778-5550.

Bingo, Caroline Post 29, Denton, every Tues., 6 p.m. 410-479-2708.

Eastern Shore Writers' Assn., 2nd Sat., place TBA. 410-482-6736.

Queen Anne's Chapter, Barbershop Harmony Society, Wed., 7:30 p.m., Centreville UM Church, Rt. 213. 410-827-7993.

Tred Avon Duplicate Bridge Club, Wed., noon, Chesapeake by Del Webb clubhouse, Dutchman's La., Easton. 410-226-5126.

Lower Delmarva Genealogical Society, 116-1 N. Division St., Salisbury, open Wed., 1-4, help with family research. 410-749-6158.

All you can eat breakfast, Eldorado-Brookview Firehouse, 3rd Sun., 7:30-10:30 a.m. \$6. 410-943-0216.

Salisbury Farmers' Market, Bus. Rts. 13 & 50, every Sat., mid-April through Dec. 410-749-6236.

Friends of the Ocean Pines Library, 2nd Mon., 10 a.m., main mtg. room of library. 410-208-2760.

Merry Widows & Widowers Social Club, 3rd Tues., 2:30 p.m., Ocean Pines Community Hall. 410-208-6207.

Blessing of the Combines, Snow Hill, **Aug. 6**, 1-4, parade, crafts, food, entertainment, tractor pull. 410-632-1334.

Park Lane Church of God, 209 Park La., Federalburg, "Fresh Fire" revival, **Aug. 12-13**, 7 p.m., **Aug. 14**, 10:30 a.m., 6 p.m. Featuring Revivalist Rick Lairsey, Easton. 410-754-9958.

Music in Fountain Park, Chestertown, **Aug. 13**, Big Hats & No Cattle, **Aug. 27**, Marlon Saunders & Mood Control. 410-778-0500.

Gospel concerts, Holiday Park, Greensboro, 6 p.m., **Aug. 13**, **Sept. 17**, **Oct. 8**. Rain or shine. \$5; free under 16 yrs.

Old Fashioned Ice Cream Social, Union UM Church, Salisbury, **Aug. 13**, 4-7, homemade ice cream, bake sale, games. 410-742-7047.

Wicomico Farm & Home Show, Equestrian Ctr., Winter Place Park, Salisbury, **Aug. 18-20**. 410-883-2342.

Rural Life Celebration, Kent Museum, Kennedyville, **Aug. 20**, 11-3, demonstrations & wheat thrashing. 410-778-6048.

Md. Natural Resource Police free personal waer craft training class, **Aug. 20**, 10-2, Kent Is. Yacht Club, Chester. Info & registration, 410-643-7527, 443-223-7832 or 410-260-3285.

Peach Festival, Preston Vol Fire House, benefit Bethesda UM Church, **Aug. 20**, 10-2, crafts & food. 410-673-7713.

Great Pocomoke Fair, **Aug. 24-27**, exhibits, games, food, antique tractor pull, fireworks. 410-957-4486.

Fall Native Plant Sale, Adkins Arboretum, Ridgely, **Sept. 10**, 9-1/410-634-2847.

Atlantic General Hospital Fall Golf Classic, Ocean City Golf Club, **Sept. 29**, shotgun start, noon. 410-641-9644.

#### SEND EVENTS TO:

Shore Good to Know, Choptank Electric Cooperative, P.O. Box 430, Denton, MD 21629; or anew@choptankelectric.coop two months prior to event if possible. Include phone number.